



a program of the
new england
environmental
finance center

Bridging the gap between community water challenges & investment in water infrastructure for future generations

The New England Environmental Finance Center (NEEFC) has worked with New England communities to build local capacity to pay for the growing cost of protecting critical environmental resources and fostering resilient communities for the last 25 years.

The **New England Water Infrastructure Network (NEWIN)** provides free technical assistance to achieve safe, affordable, and resilient **drinking water, wastewater, and stormwater systems**.

We help **municipalities, water utilities, and tribes** develop projects and secure funding from Clean Water and Drinking Water State Revolving Funds (SRFs) and other sources.

Our network offers targeted **technical, financial, and managerial** solutions that address local priorities and build community capacity.

NEWIN partners include:

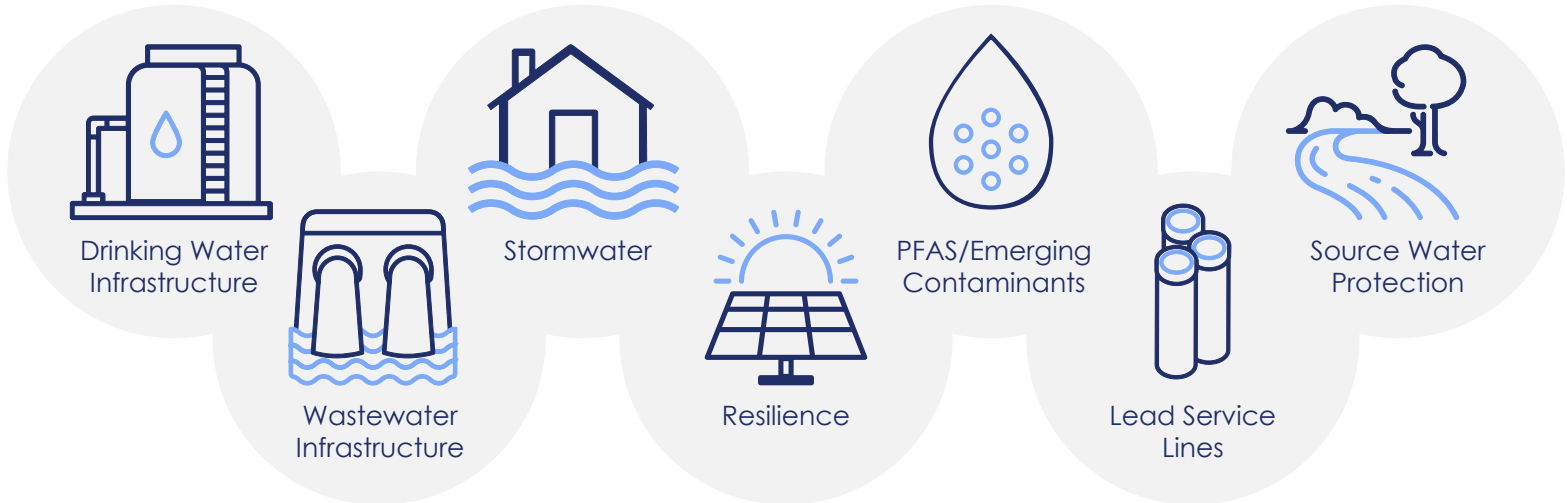


To learn more, visit www.NEEFC.org/water-infrastructure

This program is funded by the U.S. Environmental Protection Agency

working with newin

Tailored solutions to address your water needs



Collaborative assistance at every step of the process

Targeted technical assistance to put your community on the path to successful funding and implementation. NEWIN services include:

Community Engagement & Partnerships	Planning & Assessment	Project Development	Funding & Financial Management	Implementation Support
<p>Outreach, engagement & communications</p> <p>Partnership development</p> <p>Education for boards & elected officials</p> <p>Regionalization</p>	<p>Project scoping & prioritization</p> <p>Condition assessment</p> <p>Asset management</p> <p>Resilience planning</p> <p>Utility management</p> <p>Environmental review</p>	<p>Identify pre-development funding</p> <p>Review preliminary engineering</p> <p>Advance readiness to proceed</p> <p>Procurement & contracting</p>	<p>Identify funding options</p> <p>Financial assessment</p> <p>Rate & revenue analysis</p> <p>Income surveying</p> <p>Application support</p>	<p>Manage project schedule & budget</p> <p>Compliance support</p> <p>Funding requisitions</p> <p>Grant & loan reporting</p>

Request Assistance

Submit a water technical assistance request online: www.neefc.org/water-infrastructure or contact Laura Collins, laura.collins@maine.edu, (207) 780-5717

